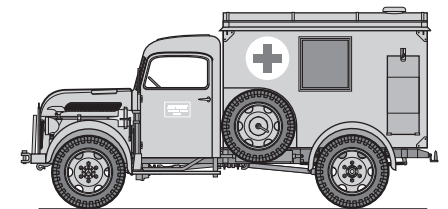


LEADWARRIOR
HISTORICAL MINIATURE

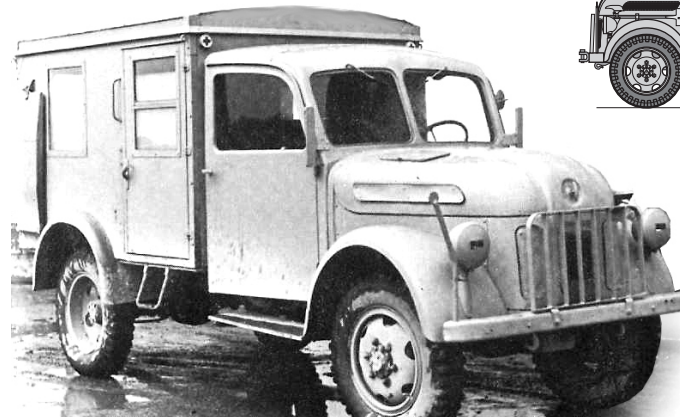
WWW.LEADWARRIOR.COM
INFO@LEADWARRIOR.COM
Ebay: LEADWARRIOR

STEYR Type 1500A Kfz.31 AMBULANCE

CONVERSION KIT for
TAMIYA Steyr Type 1500A (kit #35225)



33 RESIN PARTS

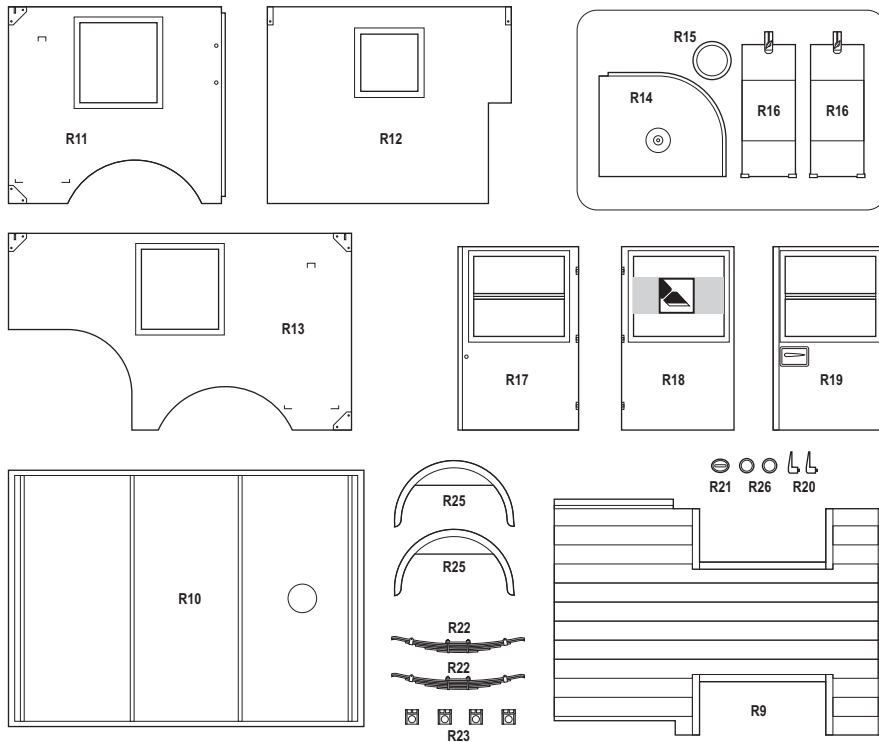


Austria's all wheel drive Steyr 1500A was one of the many personnel/transport vehicles which was designed to meet Wehrmacht requirement for standard army 1,5 ton truck. Presented in 1941, the Steyr was used as troop transport in all the war theaters. A total of more than 20,000 were built, in a wide range of variants

Tamiya presents basic and command versions. The chassis of Steyr 1500A and its reinforced variant Steyr 2000A were also used for Fire trucks, Omnibus (Leadwarrior kit Lw35026), universal "Funk-Koffer", and different types of cargo carriers with opened, metal or wooden cabins (Leadwarrior kits Lw35023, Lw35024, Lw35027).

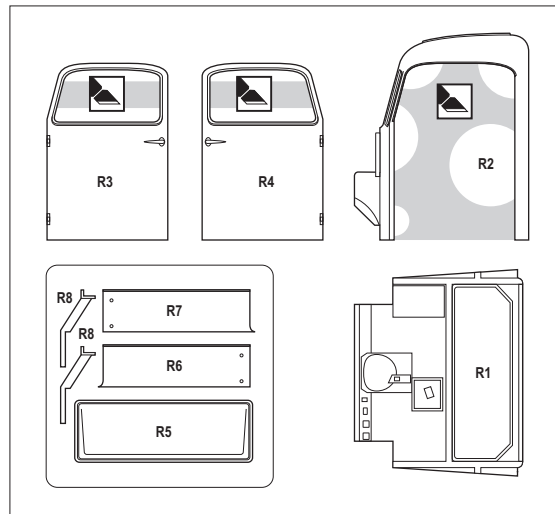
There were tests of truck on railway drive (Leadwarrior kit Lw35028). Some Steyr 2000A trucks were field-converted into AA Gun carrier (Leadwarrior kit Lw35029).

This kit presents widely used version of Steyr 1500A - an Ambulance truck with full-metal cabin. Along with Phaenomen-Granits 1500A, carrying the same standard "Sanitäts-koffer", it had formed the core of German park of ambulance vehicles of WWII.



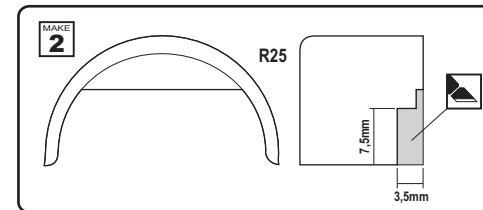
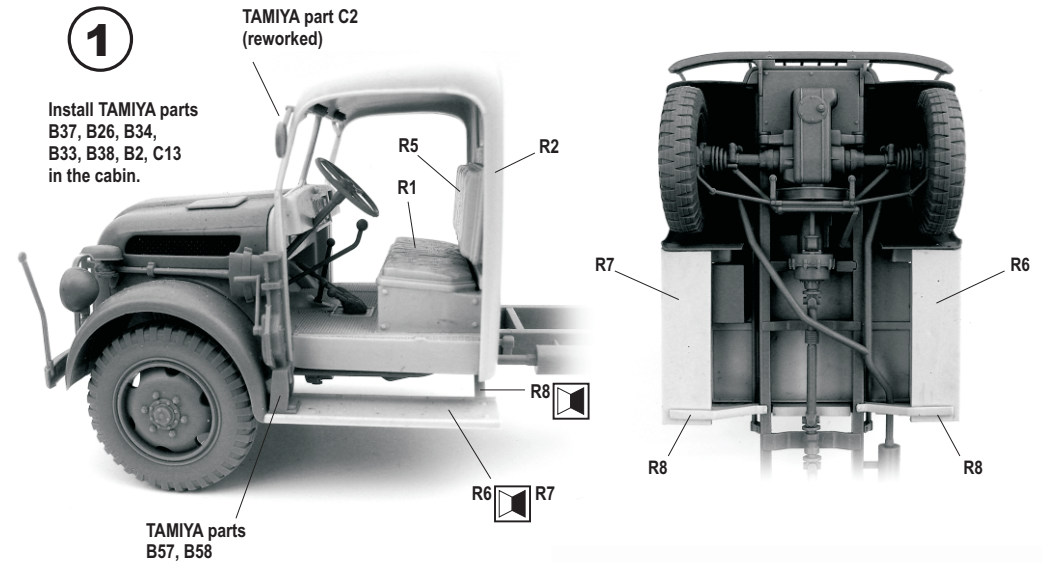
- Cut / Remove part**
- Optional**
- Repeat on mirror side**
- Repeat several times**

**STUDY THE INSTRUCTION
CAREFULLY BEFORE
ASSEMBLING.
TEST FIT PARTS
TOGETHER BEFORE
CEMENTING.
USE CYANOACRYLATE
GLUE FOR RESIN PARTS.**

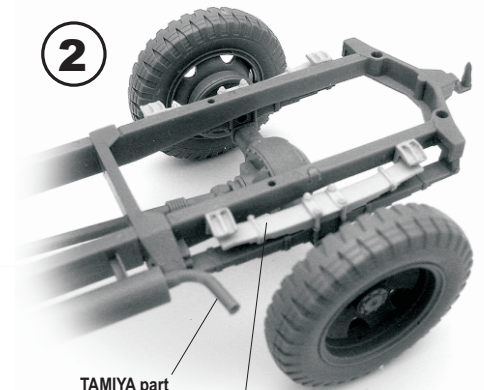


1

Install TAMIYA parts
B37, B26, B34,
B33, B38, B2, C13
in the cabin.



2



TAMIYA part
A10 (reworked)

3

